

Catalogue

# GLAMORA

Collection XI



# Bespoke Design Wallcoverings



## INDEX

Company Profile

P. 6

## COLLECTIONS

Creative Wallcoverings

The Wallpaper for Interior Design

P. 17

GlamPure

The Organic Wallcovering

P. 123

GlamFusion®

The Waterproof Wallcovering

P. 141

Colour Variants

P. 183



# GLAMORA

**IT** Dal 2010, Glamora propone nuove suggestioni di stile con rivestimenti che aggiungono un racconto alle superfici dell'architettura. Soluzioni su misura dal gusto contemporaneo per la casa, la collettività, il lavoro, create in Italia e utilizzate in tutto il mondo.

Materiali inediti e finiture preziose sono alla base della filosofia estetica di Glamora: espressioni di un codice stilistico ricercato che rimane incontaminato dai trend, pur essendo il risultato di una ricerca contemporanea.

**EN** Since 2010, Glamora has been proposing new stylistic ideas with wallcoverings that add interest to architectural surfaces. Custom solutions with a contemporary feel for home, community and work, created in Italy and used all over the world.

Brand new materials and exquisite finishes are the foundation of Glamora's aesthetic philosophy: expressions of a refined style in pursuit of the contemporary while remaining resistant to trends.

**FR** Depuis 2010, Glamora propose une multitude de nouveaux styles de revêtements à même de faire parler les surfaces architecturales. Des solutions sur mesure contemporaines pour les habitations, les collectivités et les bâtiments professionnels créés en Italie et employés dans le monde entier.

Matériaux exclusifs et finitions précieuses constituent le

fondement de la philosophie esthétique de Glamora: les expressions d'un code stylistique recherché et intemporel, le résultat d'une recherche contemporaine.

**ES** Desde 2010, Glamora propone inspiraciones de estilo a través de revestimientos que enriquecen las superficies arquitectónicas con una historia. Soluciones a medida con un gusto contemporáneo, para la casa, los lugares públicos y centros de trabajo, creadas en Italia y utilizadas en todo el mundo.

La filosofía estética de Glamora se basa en materiales inéditos y acabados de valor: expresiones de un código estilístico rebuscado que no se deja influenciar por las tendencias, a pesar de ser el resultado de una investigación contemporánea.

**DE** Seit 2010 kommt Glamora mit neuen Stilvorschlägen und bietet Verkleidungen, mit denen die Oberflächen der Architektur eine Geschichte erhalten. Maßgeschneiderte Lösungen im zeitgemäßen Design für Zuhause, die Öffentlichkeit und die Arbeit, die in Italien kreiert und in der ganzen Welt eingesetzt werden.

Neueste Materialien und kostbare Oberflächen sind die Grundlage der ästhetischen Philosophie von Glamora: Ausdruck eines raffinierten Stilcodes, der sich von Trends unbeeinflusst zeigt und obwohl er das Ergebnis moderner Forschung ist.

# BESPOKE DESIGN SERVICE

**IT** Tutte le proposte delle collezioni Glamora vengono realizzate su misura e possono essere personalizzate nei colori, nelle forme e nelle dimensioni, per rispondere alle esigenze specifiche di interior designer e progettisti. L'équipe interna è pronta ad ascoltare, dialogare e rielaborare il desiderio del cliente, accompagnandolo nello sviluppo del progetto.

Per questa ragione prestigiose aziende e studi di progettazione in Europa e nel mondo continuano a trovare in Glamora un partner competente e affidabile.

**EN** All the Glamora collections are made to measure and can be customised in colour, shape, and size, in order to meet the specific needs of interior designers and planners. Our in-house team is ready to listen to, discuss and rework the client's wishes, accompanying them throughout the development of the project.

This is why prestigious companies and design studios in Europe and around the world continue to find in Glamora a capable and reliable partner.

**FR** Tous les projets des collections Glamora sont réalisés sur mesure et peuvent être personnalisés en termes de couleurs, de formes et de dimensions pour répondre aux exigences spécifiques des décorateurs d'intérieur et des concepteurs. L'équipe interne est à l'écoute du client, toujours prête à dialoguer et à retravailler les projets

avec lui selon ses souhaits tout au long du processus de développement.

Pour cette raison des prestigieuses sociétés et agences créatives en Europe et dans le monde continuent à trouver en Glamora un partenaire compétent et fiable.

**ES** Todas las propuestas de las colecciones Glamora se realizan a medida y se pueden personalizar en cuanto a colores, formas y dimensiones, para responder a las exigencias específicas de los diseñadores de interiores y proyectistas. Nuestro equipo interno siempre está disponible para escuchar, dialogar y reelaborar el deseo del cliente, acompañándolo en el desarrollo del proyecto.

Por esto prestigiosas empresas y estudios de diseño de Europa y del mundo entero siguen encontrando en Glamora un socio competente y de confianza.

**DE** Alle Vorschläge der Glamora-Kollektion werden nach Maß gefertigt und können in Farben, Formen und Größe an die spezifischen Erfordernisse von Innenarchitekten und Konstrukteuren angepasst werden. Das interne Team ist bereit, zuzuhören, den Wunsch des Kunden zu erörtern und ihn bei der Entwicklung des Projekts zu begleiten.

Deshalb finden in Glamora stets renommierte Unternehmen und Designstudios in Europa und weltweit einen kompetenten und zuverlässigen Partner.







# SOLFERINO 27

## GLAMORA SHOWROOM MILANO

**IT** A Milano, tra Porta Garibaldi e Brera, ha sede lo showroom Glamora, in un palazzo storico di via Solferino 27. Uno spazio prestigioso e in costante evoluzione pensato per comunicare la varietà stilistica dei wallcovering Glamora. Al suo interno è possibile visionare l'intera gamma delle collezioni in scala reale, oltre a ricevere assistenza e consulenza progettuale personale da parte di un architetto dell'azienda.

**EN** The Glamora showroom is located in a historic building on Via Solferino 27 in Milan, between Porta Garibaldi and Brera. This prestigious space in constant evolution is designed to communicate the variety of the Glamora wallcovering styles. Inside, you can see the whole range of collections in full size, as well as receive assistance and personal design consultation from one of the company's architects.

**FR** Le show-room de Glamora est sis à Milan, entre Porta Garibaldi et Brera, dans un bâtiment d'époque situé au 27 via Solferino. Un espace prestigieux en constante évolution conçu pour faire connaître la variété de styles des

revêtements muraux Glamora. À l'intérieur, il est possible d'admirer l'intégralité de la collection en taille réelle, mais aussi de bénéficier d'une assistance et de conseils pour un projet personnel de la part d'un des architectes de la société.

**ES** Glamora ha abierto su salón de exposiciones en Milán, entre Porta Garibaldi y Brera, en un edificio histórico de Via Solferino 27. Un espacio prestigioso que evoluciona constantemente y que ha sido ideado para comunicar la variedad estilística del papel pintado Glamora. En su interior se puede encontrar toda la gama de las colecciones a escala real, además de recibir asistencia y asesoría de diseño personal por parte de un arquitecto de la empresa.

**DE** In Mailand, zwischen Porta Garibaldi und Brera, befindet sich in einem historischen Gebäude in der Via Solferino 27 der Glamora Showroom. Ein prestigeträchtiger und sich ständig weiterentwickelnder Raum, der die stilistische Vielfalt der Glamora Designtapeten vermitteln soll. Hier können Sie die gesamte Palette der Kollektionen in voller Größe besichtigen und erhalten persönliche Betreuung und Beratung durch einen Architekten des Unternehmens.

# ALPHABETICAL INDEX

Air Du Jardin	55	Cocoun	36	Gradient	112
Alba	170	Contemplation	176	Hanami	25
Amable	94	Crono	168	Hope	68
Amaretto	61	Devotion	159	Hybrid	92
Anacapri	150	Echoes	90	Incanto	35
Aomori	48	Elle	160	Infinito	82
Armillar	52	Emozioni	84	Interplay	130
Aromas	158	Empathy	108	Jeu	40
Arpa	105	Enigma	51	Jovis	166
Atollo	80	Epilogue	32	Karibu	41
Azur	154	Equilibrium	71	Koi	46
Bouquet	100	Esedra	66	Kokoro	132
Bright Crystal	26	Favola	58	La Fleur	110
Cafuné	118	Filix	101	Lapis	31
Caillou	54	Flirting	180	Linea	34
Cameleon	24	Float	28	Lovers	22
Caractère	148	Folia	120	Luce	86
Celato	106	Foliage	129	Lucid Dream	88
Charming Lady	115	Fontelina	165	Mambo	96
Circus	50	Future Perfect	111	Manifesto	62

Materia	134	Quadrophenia	114	Tori	60
Memoria	146	Quiet Place	136	Tropicalia	56
Mimas	42	Quisisana	149	Whisper	178
Mistery	179	Ricordi	45	Wink	30
Moonshot	174	Ritual	44	You	72
Morning Light	138	Sabi	104		
Nebula	155	Saphir	172		
Nido	64	Segreto	152		
Novel	95	Sensitive	135		
Oltremare	162	Shibumi	121		
Overseas	116	Silenzio	81		
Paradiso	98	Sleepers	169		
Passepartout	65	Soffio	70		
Pause	76	Soleil	91		
Per Sempre	102	Spark	139		
Philo	156	Spike	164		
Piaf	74	Stille	128		
Piazzetta	175	Taiki	38		
Piuma	85	Taipei	75		
Prelude	78	Temps Perdu	126		

# STYLE INDEX

## NATURE

Air Du Jardin, Alba,  
Amable, Aomori,  
Armillia, Azur, Bouquet,  
Celato, Charming Lady,  
Contemplation, Crono,  
Devotion, Elle, Emozioni,  
Empathy, Esedra, Favola,  
Filix, Flirting, Folia,  
Foliage, Future Perfect,  
Gradient, Hanami, Hope,  
Incanto, Koi, Kokoro, La  
Fleur, Lovers, Materia,  
Memoria, Mistery,  
Morning Light, Nebula,  
Nido, Novel, Oltremare,  
Overseas, Paradiso,  
Passepartout, Pause,  
Per Sempre, Piaf, Piuma,  
Quisisana, Ricordi, Ritual,  
Sabi, Segreto, Sensitive,  
Silenzio, Sleepers, Soffio,  
Spike, Stille, Temps  
Perdu, Tori, Whisper, You.

## ABSTRACT

Amaretto, Anacapri,  
Aromas, Arpa, Atollo,  
Azur, Bright Crystal,  
Caillou, Cameleon,  
Caractère, Circus,  
Cocoun, Echoes,  
Epilogue, Equilibrium,  
Favola, Float, Foliage,  
Fontelina, Gradient,  
Hope, Hybrid, Incanto,  
Infinito, Interplay, Jeu,  
Jovis, Karibu, Lapis,  
Linea, Luce, Lucid Dream,  
Mambo, Manifesto,  
Mimas, Moonshot,  
Morning Light, Overseas,  
Paradiso, Pause, Philo,  
Piazzetta, Piuma, Prelude,  
Quadrophenia, Saphir,  
Soleil, Spark, Spike, Taiki,  
Tropicalia, You.

## GEOMETRIC

Alba, Amaretto, Armilla,  
Arpa, Atollo, Bouquet,  
Bright Crystal, Cafuné,  
Caillou, Cameleon,  
Caractère, Celato,  
Cocoun, Devotion, Elle,  
Emozioni, Empathy,  
Enigma, Epilogue,  
Equilibrium, Filix, Float,  
Fontelina, Future  
Perfect, Hope, Infinito,  
Interplay, Jeu, Karibu,  
La Fleur, Lapis, Linea,  
Lovers, Luce, Mambo,  
Manifesto, Materia,  
Mimas, Moonshot,  
Nebula, Novel, Oltremare,  
Paradiso, Passepartout,  
Pause, Per Sempre, Philo,  
Piazzetta, Quadrophenia,  
Quiet Place, Sabi, Saphir,  
Sensitive, Shibumi,  
Spark, Stille, Tropicalia,  
Wink, You.

## ACROSS THE WORLD

Aomori, Arpa, Atollo,  
Caractère, Circus,  
Enigma, Esedra, Float,  
Fontelina, Future Perfect,  
Hanami, Infinito, Karibu,  
Koi, Kokoro, Materia,  
Mimas, Nido, Overseas,  
Quiet Place, Ritual,  
Sabi, Sensitive, Shibumi,  
Sleepers, Stille, Taiki,  
Taipei, Tori, Tropicalia.

## TEXTURED

Air Du Jardin, Aromas,  
Cafuné, Caillou,  
Contemplation, Crono,  
Devotion, Elle, Epilogue,  
Esedra, Filix, Foliage,  
Gradient, Hybrid,  
Interplay, Jovis, Materia,  
Memoria, Moonshot,  
Nido, Piazzetta, Prelude,  
Quiet Place, Quisisana,  
Sabi, Sensitive, Silenzio,  
Sleepers, Spike, Taipei,  
Temps Perdu, Tori, Wink.





# Creative Wallcoverings

## The Wallpaper for Interior Design

La Collection XI accoglie e reinterpreta con tratto personale echi del mondo dell'arte contemporanea e della moda, accenti etnici e suggestioni green da fiaba.

Giochi di rifrazioni e vibrazioni, effetti di trasparenze e cromie fluo rimandano alle creazioni fluide di Janet Echelman, artista americana che lavora con la luce, il vento, l'acqua. Altri colori e invenzioni decorative echeggiano l'universo dello stilista inglese Michael Fish che, alla fine degli anni Sessanta, ridisegna tavolozze e pattern tradizionali sulla scia dei toni e delle partiture fuori dagli schemi della scena musicale del periodo. I suoi cromatismi vestono personaggi come Mick Jagger e David Bowie e migrano, in un'originale versione, sulle pareti firmate Glamora.

Al desiderio di evasione per riscoprire il contatto con la natura, rispondono soggetti a tema floreale e vegetale che ricreano negli interni spazi verdi segreti. Situazioni immersive disegnano giardini d'inverno indoor ed eleganti verande, idealmente progettati da un landscape designer contemporaneo. Lo straordinario intersecarsi delle culture, dando vita a nuovi linguaggi, si rintraccia nei grafismi e negli intrecci che sembrano affiorare sulle texture, spaziando dall'Africa all'Estremo Oriente.

Rivisitate e amplificate, queste ispirazioni animano la Collection XI. E il viaggio continua.

*Collection XI incorporates and reinterprets with a personal touch echoes of the contemporary art and fashion world, ethnic accents and fairytale hints of green.*

*Tricks of reflections and vibrations, transparent effects, and neon shades recall the fluid creations of Janet Echelman, the American artist who works with light, wind, and water. Other colours and decorative innovations evoke the world of English fashion designer Michael Fish who, in the late Sixties, reshaped traditional palettes and patterns, influenced by the revolutionary sounds of the music scene of that period. Its colours dress personalities such as Mick Jagger and David Bowie and are transferred in a unique version onto Glamora-designed walls.*

*The desire to get away and get back to nature is fulfilled by floral and foliage themed designs which bring secret leafy spaces indoors. Immersive settings create winter gardens and elegant verandas, ideally designed by a contemporary landscape stylist. An extraordinary intersection of cultures, giving rise to new styles, can be traced through the patterns and weavings that seem to emerge from the textures, ranging from Africa to the Far East.*

*These are the inspirations, revisited and expanded, behind Collection XI. And the journey continues.*



## MATERIALS

Le collezioni Glamora combinano fonti di ispirazione e codici artistici eterogenei in modo inedito ed elegante, reinterpretandoli in chiave contemporanea. L'obiettivo è dare vita a un design capace di porre enfasi tanto sull'estetica quanto sull'utilizzo e sull'idea di progetto. La collezione Creative Wallcoverings è declinabile su GlamDecor, GlamTrace, GlamMetal e GlamAcoustic.

*The Glamora collections stylishly and uniquely combine disparate sources of inspiration and artistic codes, reinterpreting them with a contemporary slant. The aim is to create a design that places as much emphasis on aesthetics as it does on the use and concept of the project. The Creative Wallcoverings collection is available on GlamDecor, GlamTrace, GlamMetal and GlamAcoustic.*



# MATERIALS

## GlamDecor

### The Vinyl Wallcovering

La carta da parati ideale per rivestire in modo semplice e rapido pareti, soffitti, porte e ante di armadiature. Prodotta con inchiostri ecologici, respirabili e inodori, è la soluzione idonea per superfici interne in ambito residenziale, commerciale, hospitality e sanitario.

*The ideal wallpaper to cover walls, ceilings, doors and wardrobe doors simply and quickly. Produced using environmentally friendly, breathable and odourless inks, it is the perfect solution for any interior surface, whether residential, commercial hospitality or healthcare.*

## GlamTrace

### The Nonwoven Wallcovering

Un rivestimento dal rilievo vivo che ricorda la carta fatta a mano e dona profondità al disegno. Simile ad un tessuto morbido al tatto, la sua superficie è realizzata con materiali che omaggiano la ricchezza e le irregolarità delle fibre naturali.

*A clear-cut relief wallcovering that recalls handmade paper and gives depth to the design. Similar to a soft-touch fabric, its surface is made of materials that pay homage to the richness and irregularities of natural fibres.*

## GlamAcoustic

### The Acoustic Wallcovering

Caratterizzato da proprietà fonoassorbenti e fonoisolanti che migliorano il comfort acustico degli ambienti. GlamAcoustic è un rivestimento vinilico formato da strati differenziati che permettono di ridurre i rumori provenienti dall'esterno e la fuoriuscita di quelli emessi dall'interno.

*With its sound-absorbing and sound-insulating properties, it is a vinyl wallcovering that improves the room's acoustic comfort. Its layers allow to reduce noises from outside, as well as muffle the ones from the inside.*

## GlamMetal

### The Metallic Wallcovering

Ottenuto dall'unione di una sottile laminatura metallizzata e una texture che richiama la consistenza tessile, permette di caratterizzare gli ambienti con una combinazione di mix cromatici ed effetti iridescenti.

*Created from a combination of thin metallic laminate and a fabric-like texture, it plays with colour and iridescent effects to give interiors a distinctive look.*

LOVERS





# CAMELEON



Code: GLXI351A  
Colour Variants: P. 184



# HANAMI



Code: GLXI561A  
Colour Variants: P. 184

# BRIGHT CRYSTAL



Code: GLXI311A  
Colour Variants: P. 184

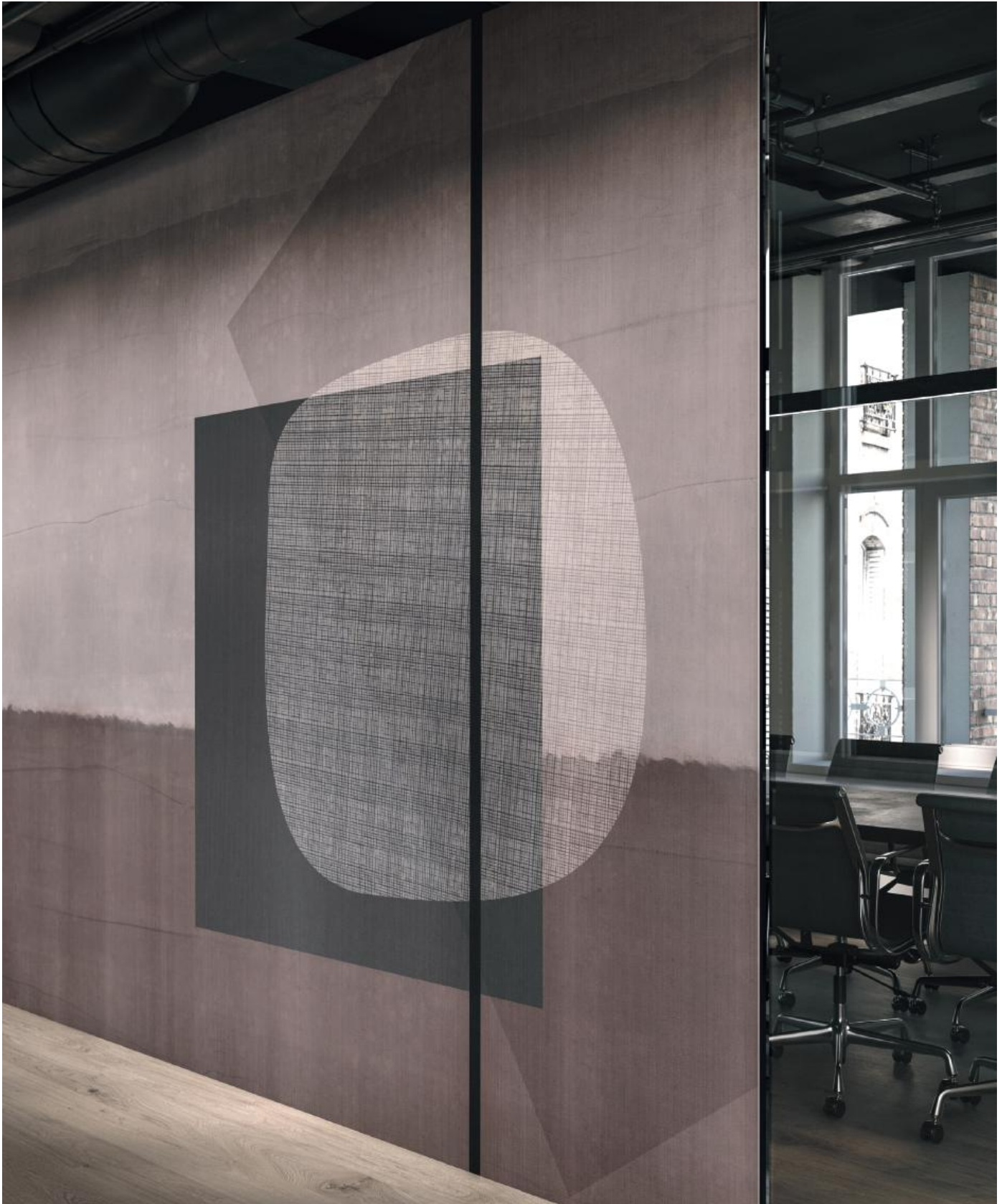


FLOAT





# WINK



Code: GLXI481A  
Colour Variants: P. 185

# LAPIS



Code: GLXI411A  
Colour Variants: P. 185

# EPILOGUE







# LINEA



Code: GLXI461A  
Colour Variants: P. 186

# INCANTO



Code: GLXI231A  
Colour Variants: P. 186



# COCOUN



Code: GLXI491A  
Colour Variants: P. 186

TAIKI





JEU



Code: GLXI361A  
Colour Variants: P. 187



# KARIBU



Code: GLXI721A  
Colour Variants: P. 187

MIMAS



Code: GLXI671A  
Colour Variants: P. 187



# RITUAL



Code: GLXI591A  
Colour Variants: P. 187

RICORDI



Code: GLX171A  
Colour Variants: P. 188

KOI



Code: GLXI621A  
Colour Variants: P. 188



AOMORI







# CIRCUS



Code: GLX1741A  
Colour Variants: P. 188

# ENIGMA



Code: GLXI691A  
Colour Variants: P. 189

ARMILLA





# CAILLOU



Code: GLXI521A  
Colour Variants: P. 189

# AIR DU JARDIN



Code: GLXI221A  
Colour Variants: P. 189





# TROPICALIA



Code: GLXI661A  
Colour Variants: P. 190

FAVOLA



Code: GLXI161A  
Colour Variants: P. 190

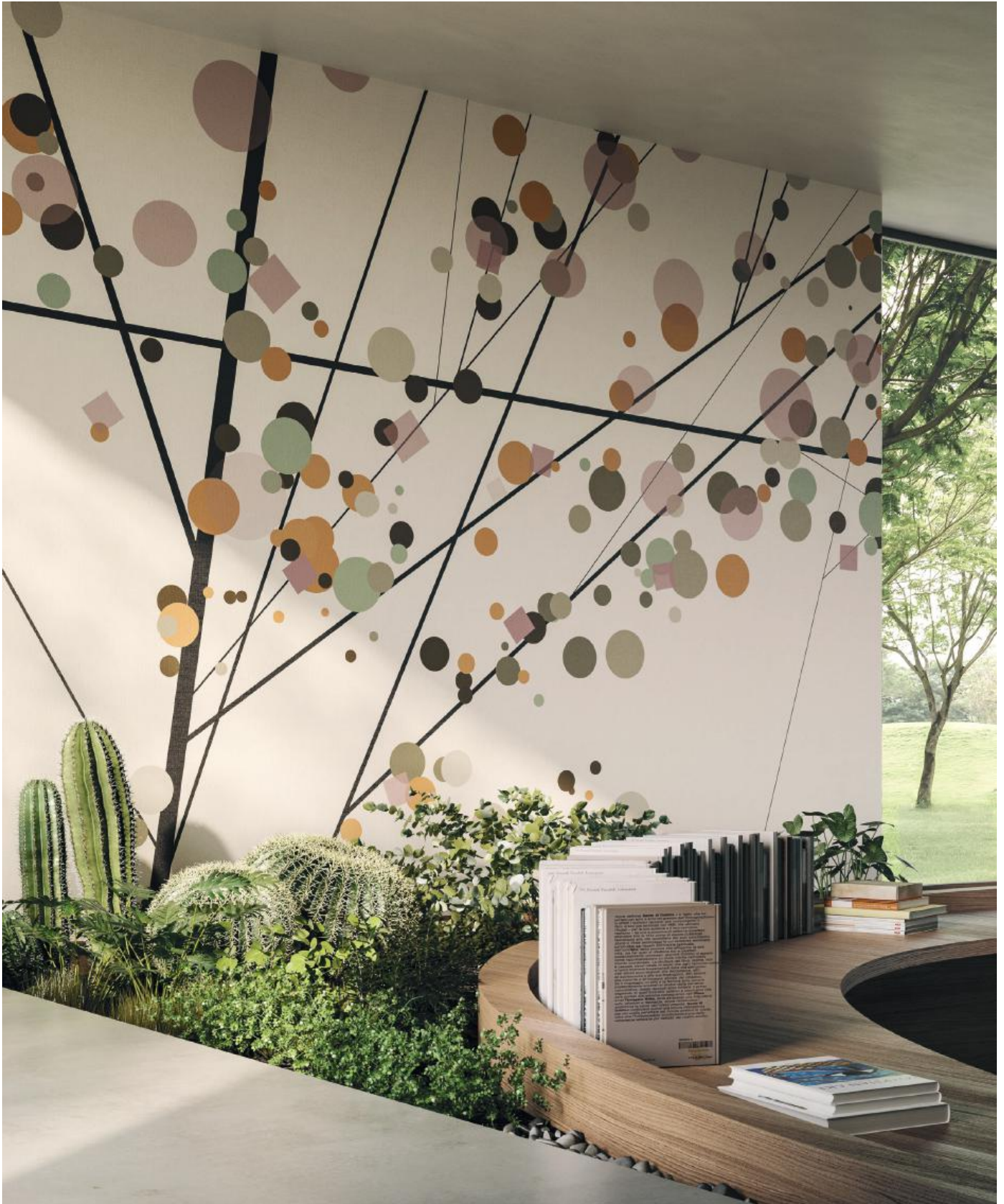


# TORI



Code: GLXI771A  
Colour Variants: P. 190

# AMARETTO



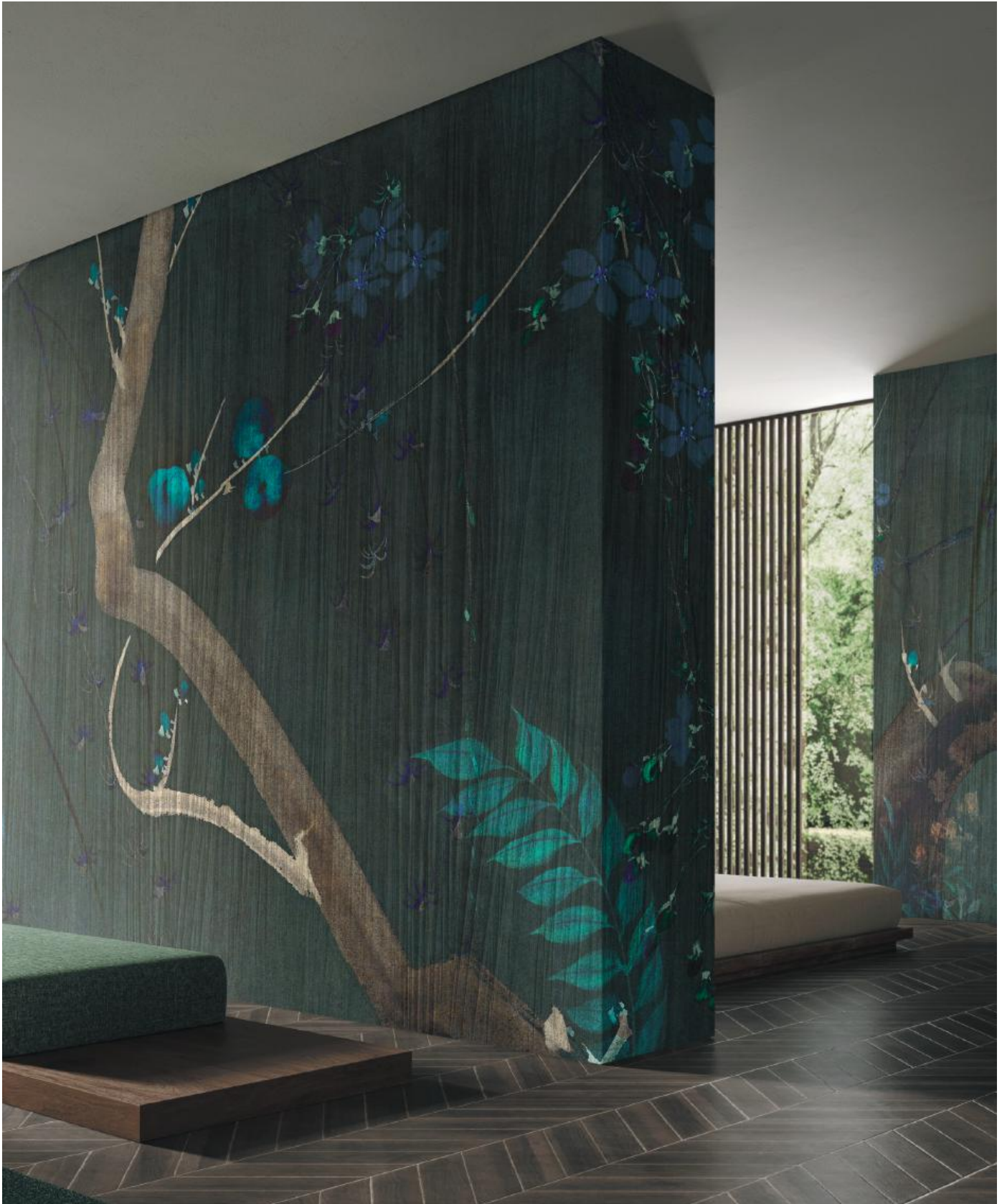
Code: GLXI371A  
Colour Variants: P. 190

# MANIFESTO





NIDO



Code: GLXI611A  
Colour Variants: P. 191



# PASSEPARTOUT

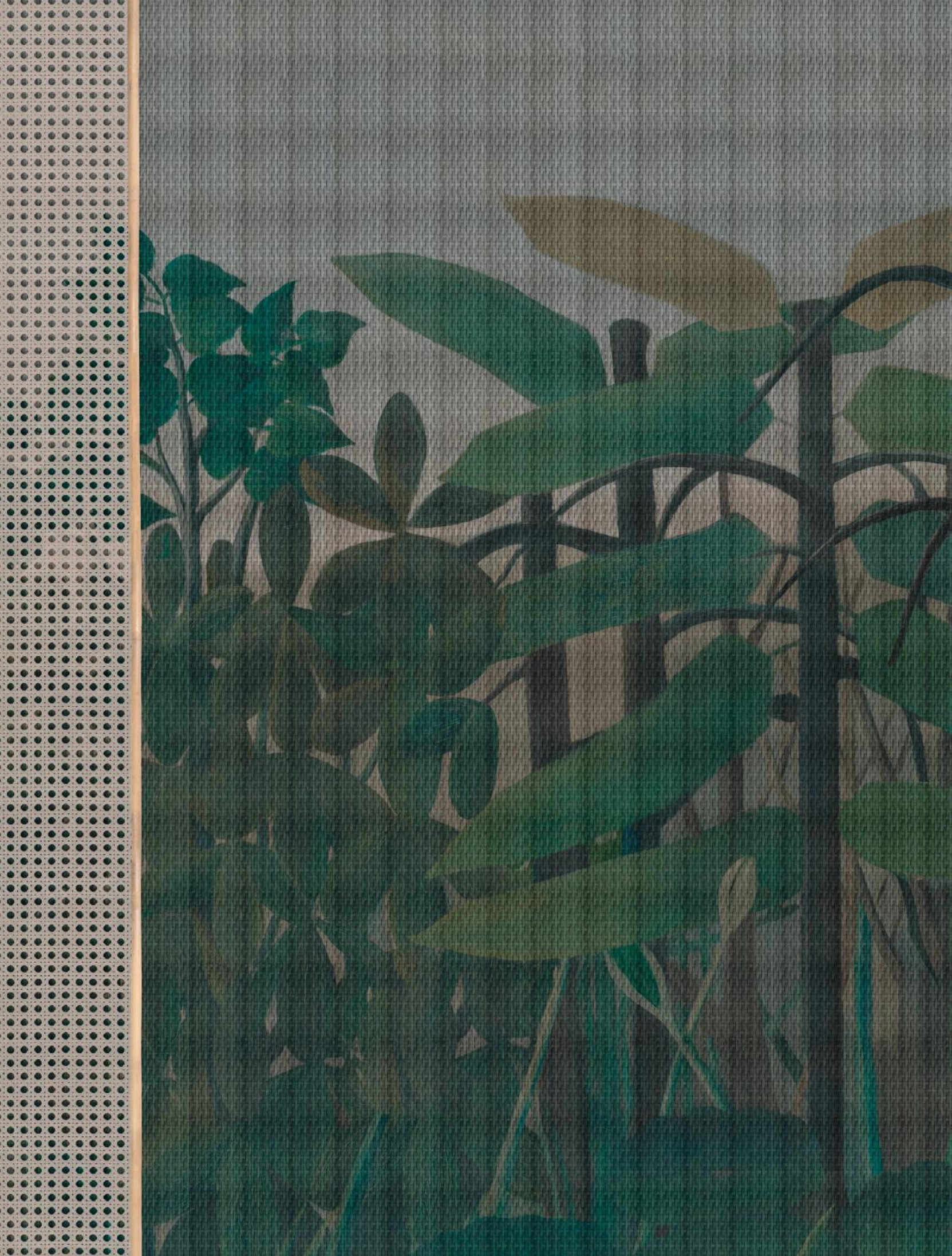


Code: GLXI111A  
Colour Variants: P. 191

# ESEDRA



Code: GLXI751A  
Colour Variants: P. 191



HOPE





# SOFFIO



Code: GLXI41A  
Colour Variants: P. 192

# EQUILIBRIUM



Code: GLXI331A  
Colour Variants: P. 192

YOU







PIAF

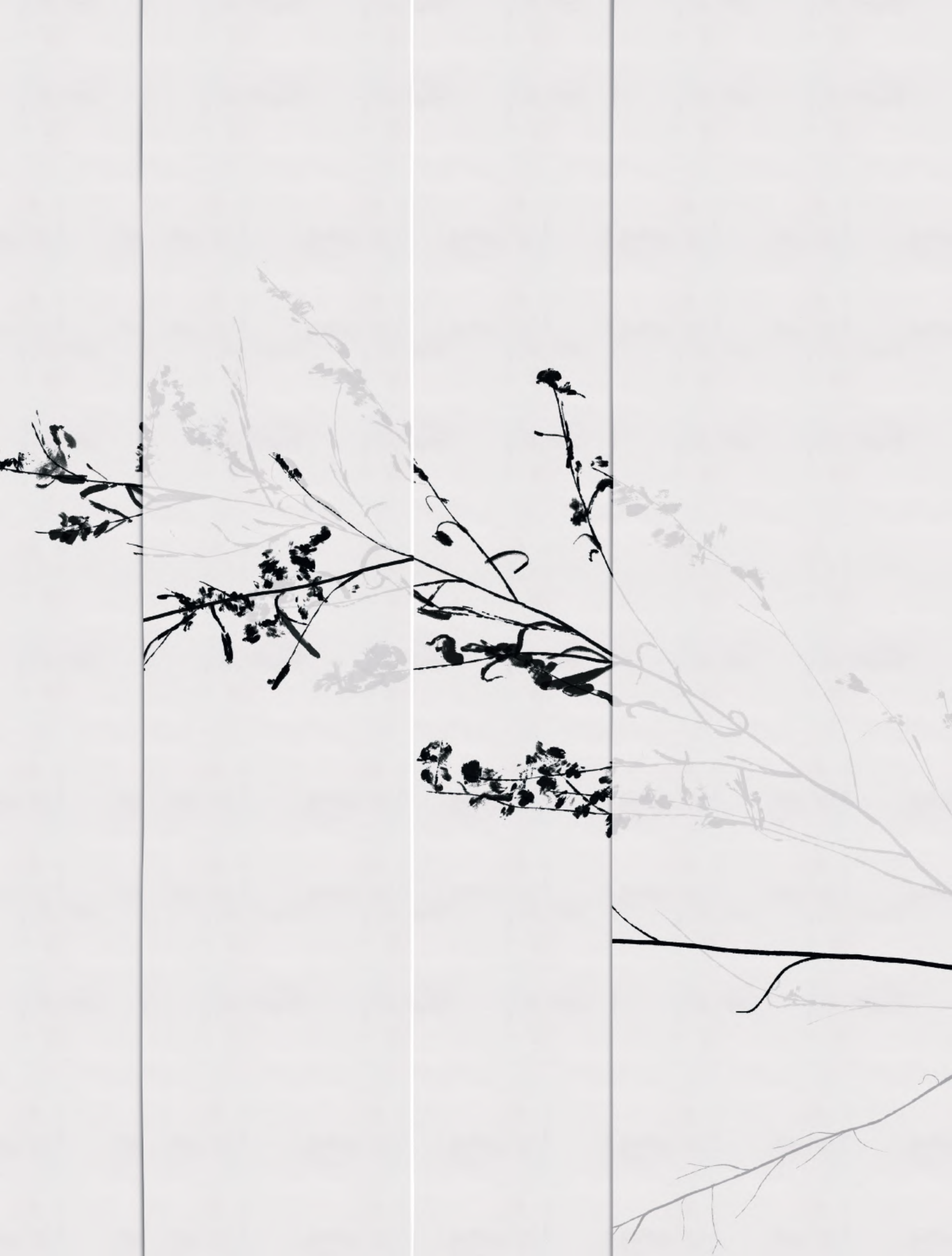


Code: GLX1151A  
Colour Variants: P. 193

# TAIPEI



Code: GLXI731A  
Colour Variants: P. 193



# PAUSE



Code: GLXI241A  
Colour Variants: P. 193

# PRELUDE





# ATOLLO



Code: GLXI681A  
Colour Variants: P. 194



# SILENZIO



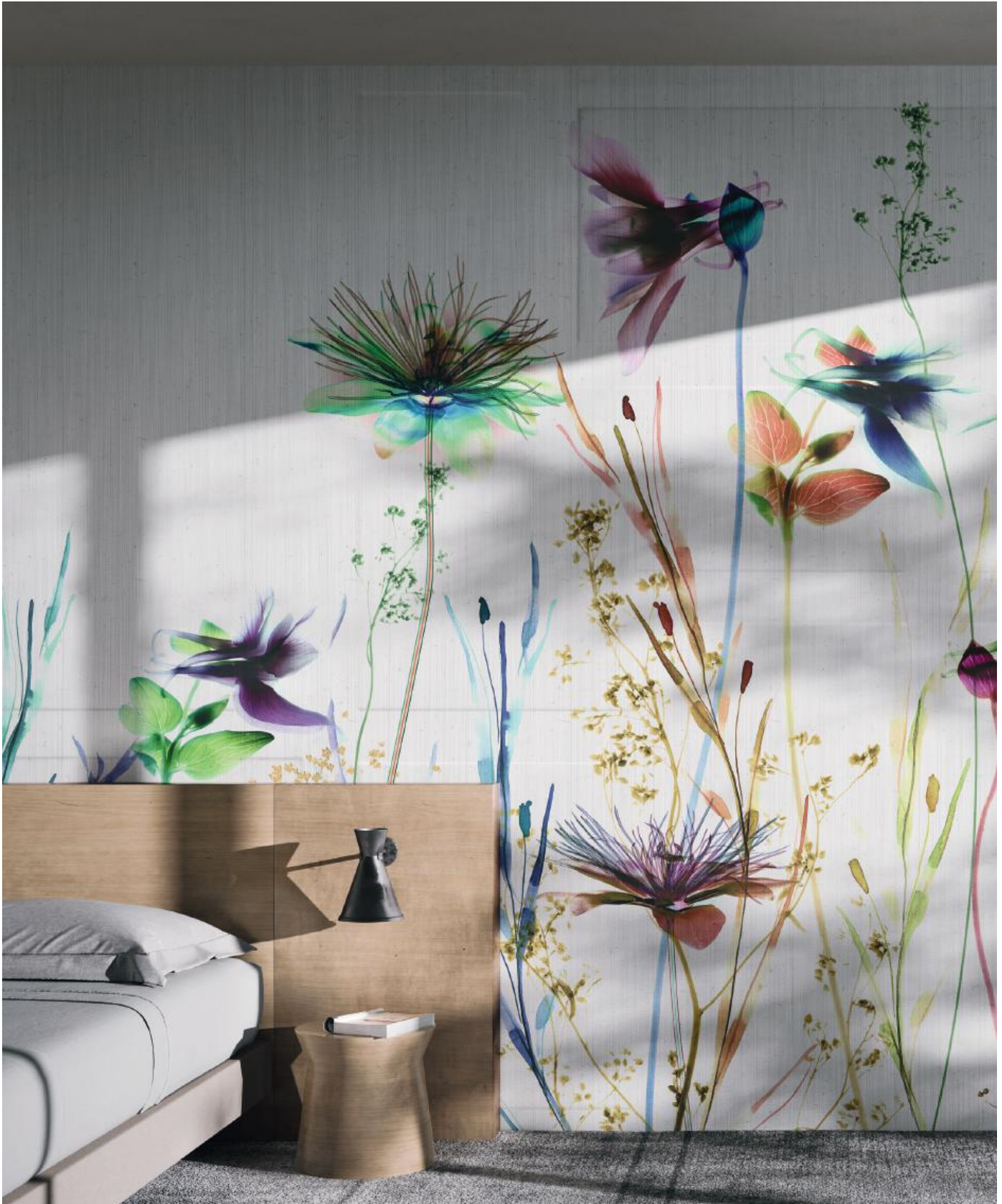
Code: GLXI91A  
Colour Variants: P. 194

INFINITO





# EMOZIONI



Code: GLXI271A  
Colour Variants: P. 194

# PIUMA



Code: GLXI181A  
Colour Variants: P. 195

# LUCE



Code: GLXI261A  
Colour Variants: P. 195



LUCID DREAM





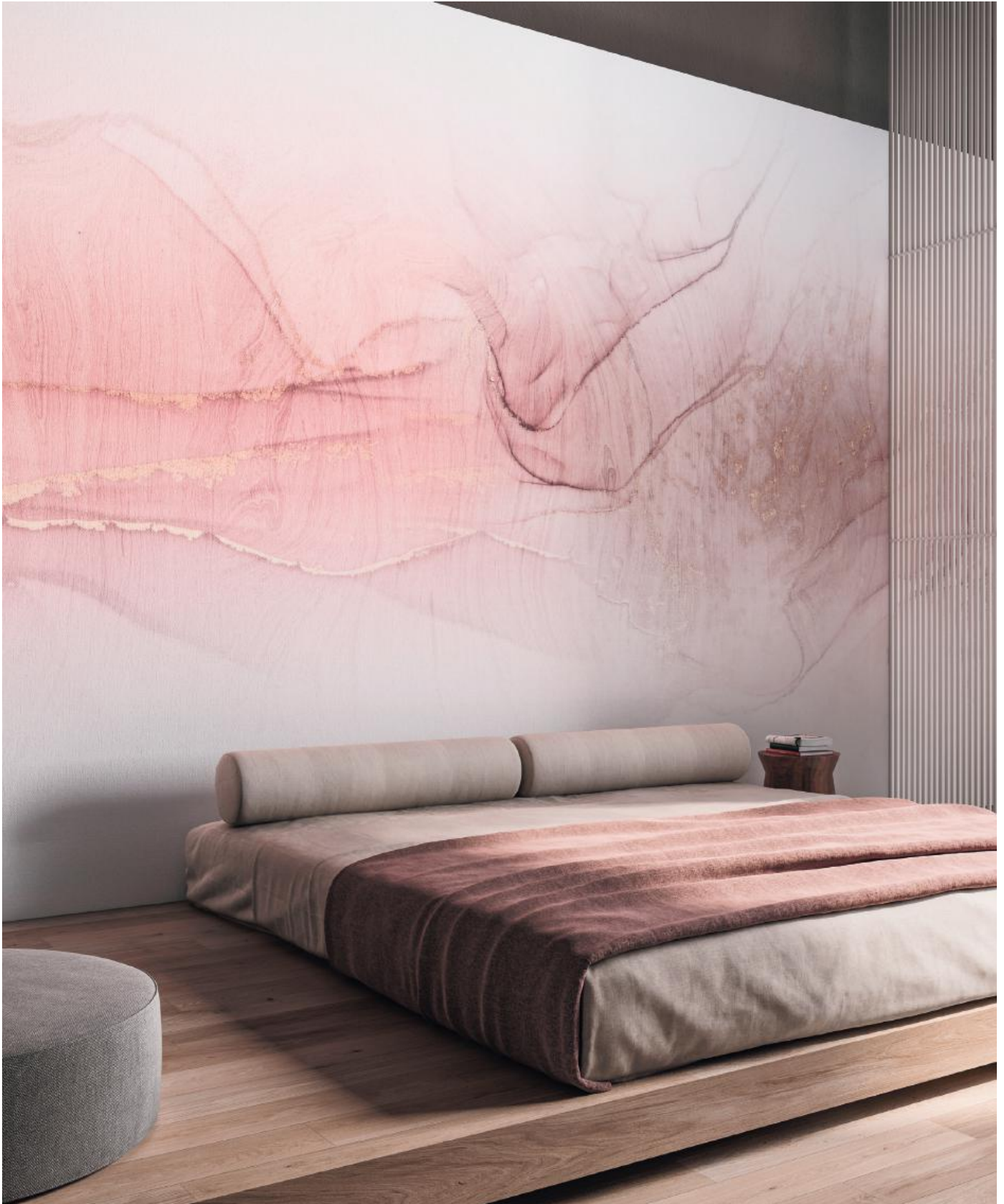


# ECHOES



Code: GLXI631A  
Colour Variants: P. 195

# SOLEIL



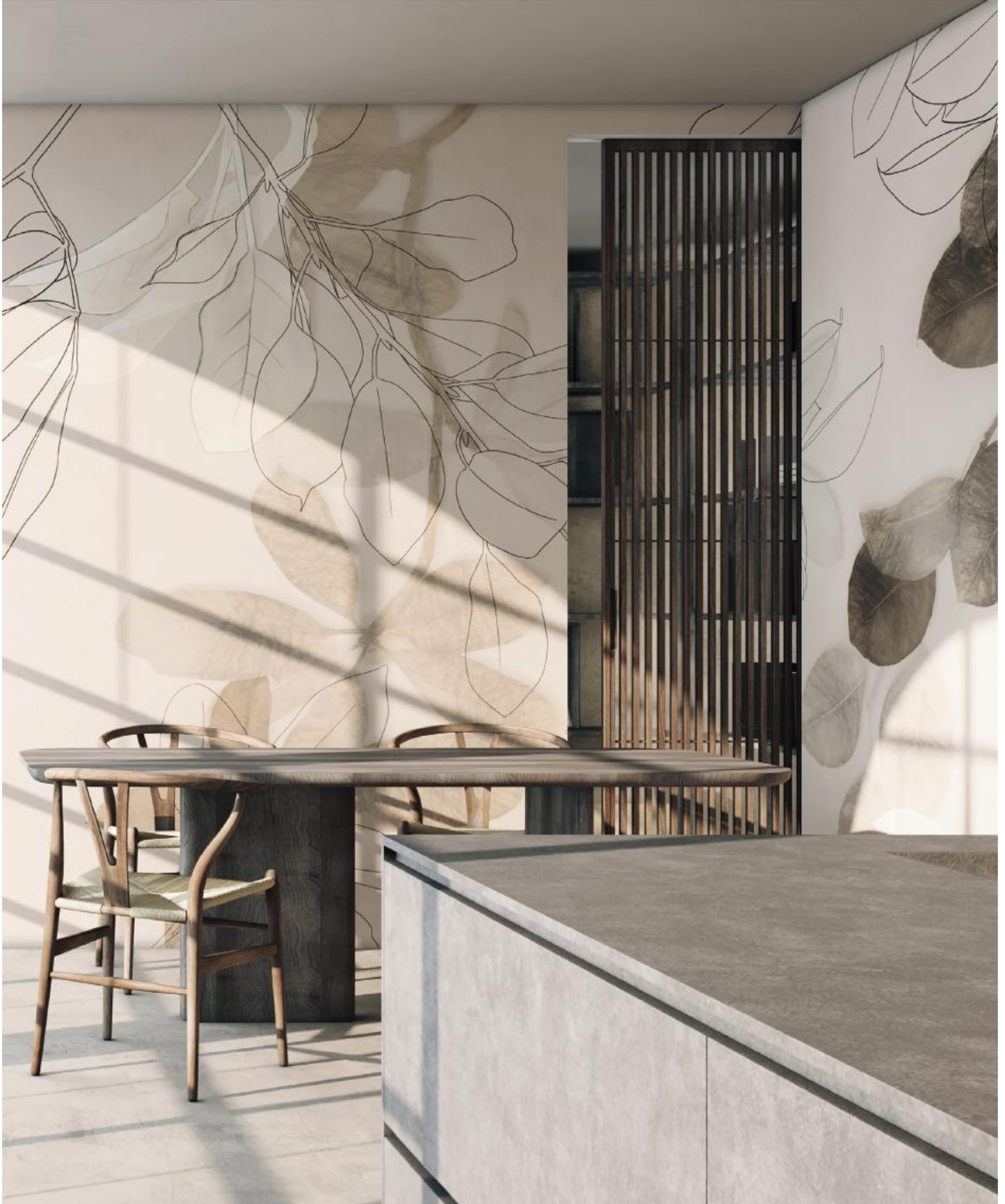
Code: GLXI281A  
Colour Variants: P. 196

# HYBRID





# AMABLE

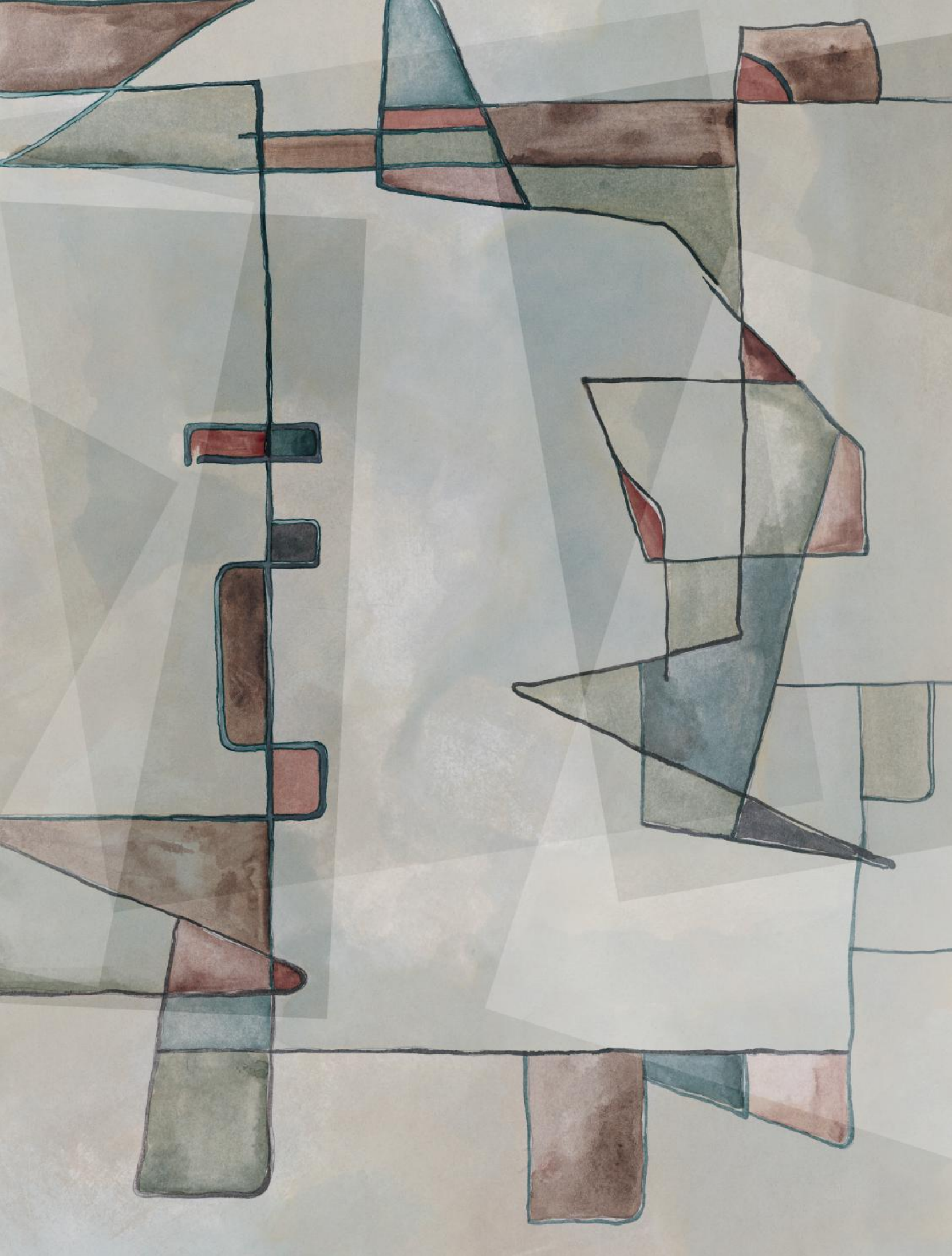


Code: GLX1171A  
Colour Variants: P. 196

# NOVEL



Code: GLX1121A  
Colour Variants: P. 196





# MAMBO



Code: GLXI341A  
Colour Variants: P. 197

PARADISO





# BOUQUET



Code: GLXI471A  
Colour Variants: P. 197

# FILIX



Code: GLXI81A  
Colour Variants: P. 197

PER SEMPRE





SABI



Code: GLXI581A  
Colour Variants: P. 198



# ARPA



Code: GLX1711A  
Colour Variants: P. 198

# CELATO



Code: GLXI141A  
Colour Variants: P. 198



# EMPATHY





# LA FLEUR



Code: GLXI51A  
Colour Variants: P. 199

FUTURE PERFECT



Code: GLXI381A  
Colour Variants: P. 199

# GRADIENT







# QUADROPHENIA



Code: GLXI431A  
Colour Variants: P. 200

# CHARMING LADY



Code: GLXI61A  
Colour Variants: P. 200



# OVERSEAS



Code: GLXI761A  
Colour Variants: P. 200

# CAFUNÉ





# FOLIA



Code: GLX1191A  
Colour Variants: P. 201



# SHIBUMI



Code: GLXI551A  
Colour Variants: P. 201



# GlamPure

## The Organic Wallcovering

Ispirata alla tecnica giapponese del washi, la collezione gioca sulla stratificazione di elementi naturali o leggere trame trattate come garze impalpabili sovrapposte. Le pareti disegnano spazi dove è presente la natura in una gamma di colori delicati con toni terrosi. Effetti di luci e di ombre, proiezioni e trasparenze di foglie e fiori fluttuano sospesi sulla superficie, proponendo un approccio olistico all'abitare che segue i principi della biofilia e invita alla riconnessione con il mondo naturale.

*Inspired by the Japanese washi technique, the collection works on the concept of stratification by layering natural elements or subtle patterns, like weightless gauzes. The walls design spaces inhabited by nature, in a range of delicate colours and earthy shades. Interactions of light and shadows, projections and transparencies of leaves and flowers hover over the surface, proposing a holistic approach to home decor in line with the principles of biophilic design, inviting people to rediscover their affinity with the natural world.*



## MATERIAL

GlamPure è un rivestimento sostenibile, interamente composto da materie prime vegetali. Le qualità tecniche ne fanno una soluzione adatta all'applicazione in contesti di bioarchitettura residenziale e hospitality: presenta infatti proprietà di assorbimento dell'umidità e caratteristiche isolanti, termoregolatrici, di resistenza e anallergiche.

*GlamPure is composed of organic fibres, making it an eco-sustainable wallcovering with a small environmental footprint. Its technical qualities also make it ideal for use in residential and hospitality contexts inspired by bioarchitecture. GlamPure stands out for its humidity-absorbing, insulating, heat-regulating, anti-allergy properties and exceptional durability.*

TEMPS PERDU





# STILLE



Code: GLPU71A  
Colour Variants: P. 202



# FOLIAGE



Code: GLPU21A  
Colour Variants: P. 202

# INTERPLAY



Code: GLPU91A  
Colour Variants: P. 202



KOKORO



Code: GLPU111A  
Colour Variants: P. 203



# MATERIA



Code: GLPU11A  
Colour Variants: P. 203

# SENSITIVE



Code: GLPU41A  
Colour Variants: P. 203

# QUIET PLACE







# MORNING LIGHT



Code: GLPU81A  
Colour Variants: P. 204

# SPARK



Code: GLPU61A  
Colour Variants: P. 204



# GlamFusion®

## The Waterproof Wallcovering

Con la sua natura mediterranea, i fondali marini, le architetture che vivono nel paesaggio, è Capri, l'Isola Azzurra, l'ispirazione di collezione. Le composizioni dominate dal bianco, un rimando alle case in calce locali, sono animate da elementi vegetali con particolari effetti trompe l'oeil. Le texture materiche, percorse da forti pennellate, evocano i mondi sommersi nelle profondità del mare e un mosaico tridimensionale di sensazioni tattili e visive, intimamente legate ai paesaggi, ai colori, alle architetture, ai profumi del luogo.

*With its Mediterranean nature, sea floors, and fusion of architecture and landscape, Capri, the Blue Island, provides the inspiration for the collection. Its predominantly white compositions, which recall the local limewash houses, are made vibrant by plant details featuring unusual trompe l'oeil effects. Intense brushstrokes run through solid textures that evoke worlds submerged in the depths of the sea and a 3D mosaic of tactile and visual sensations, closely linked to the scenery, colours, architecture, and fragrances of this place.*

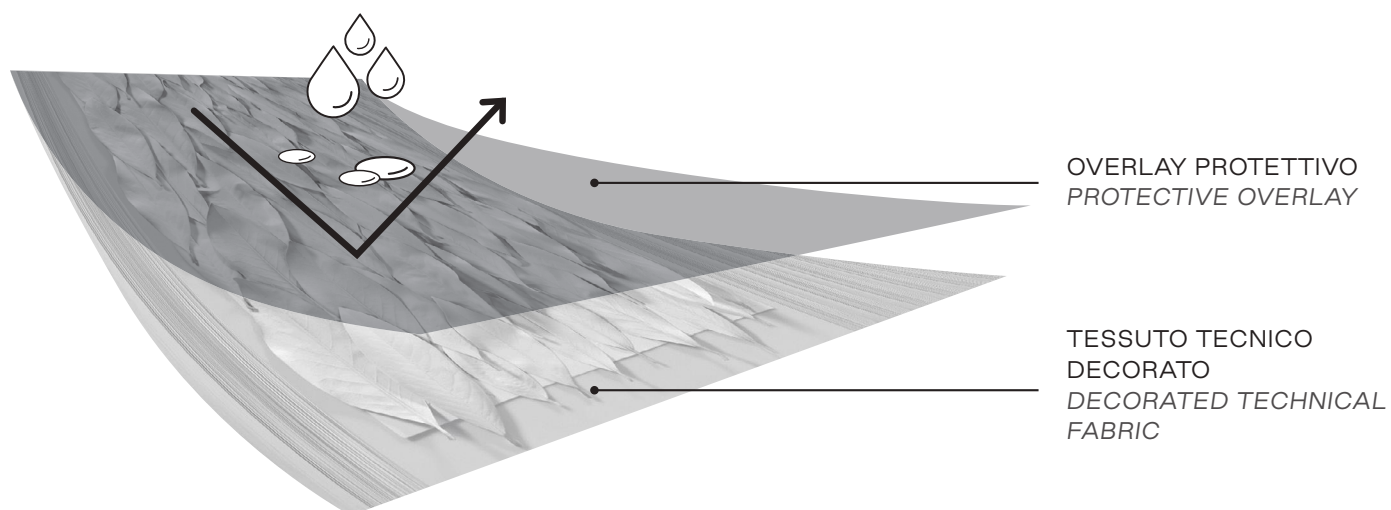


## MATERIAL

È la carta da parati waterproof brevettata che non richiede alcuna applicazione impermeabilizzante da parte del posatore. Sintesi perfetta di funzionalità tecnica ed estetica, è il rivestimento ideale per le pareti a contatto con acqua o sottoposte a sollecitazioni intense, di natura sia meccanica sia chimica.

*This patented ready to use waterproof wallpaper does not require waterproofing by the paperhanger. The perfect combination of technical functionality and style, GlamFusion® is the ideal covering for walls which come into contact with water or are subjected to intense mechanical force or chemical exposure.*

## GLAMFUSION® TECHNOLOGY

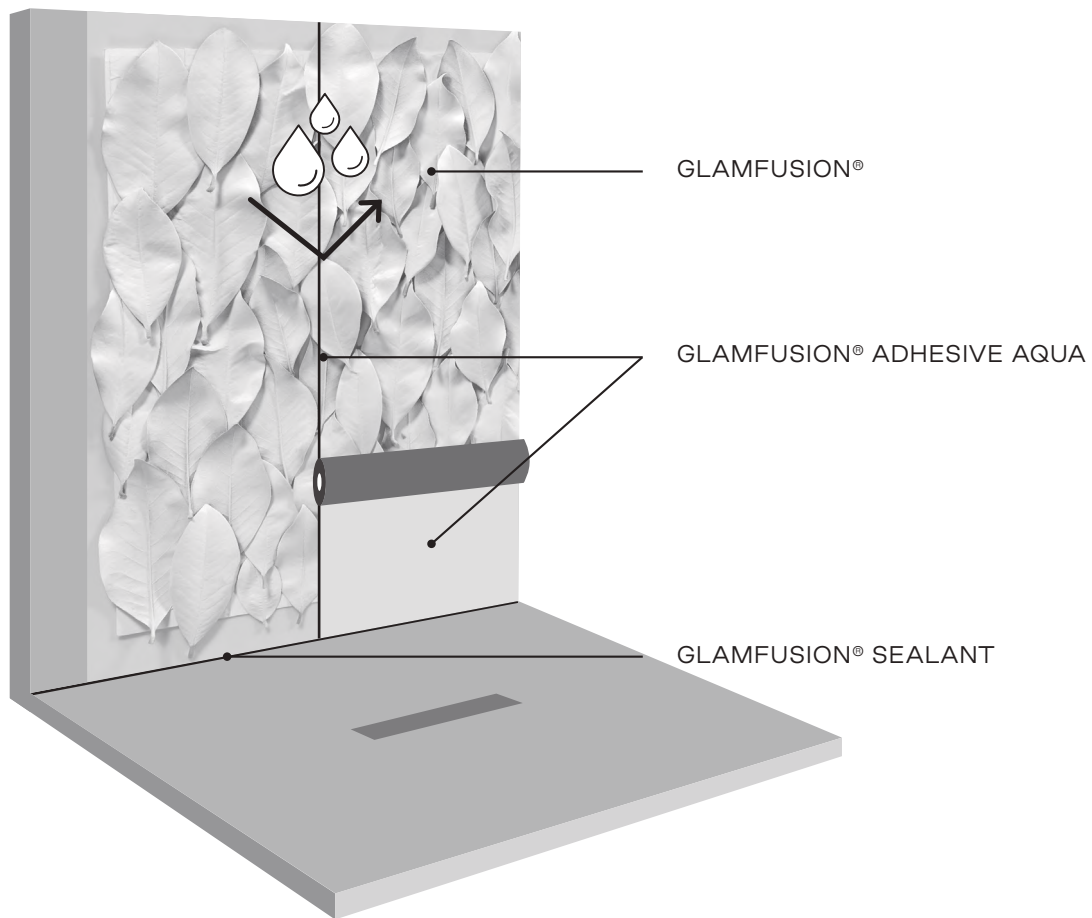


Il processo produttivo, condotto totalmente in-house, è sviluppato grazie a una tecnologia all'avanguardia: al tessuto tecnico decorato viene applicato un overlay performante che impermeabilizza, protegge e isola ermeticamente la base tessile e la decorazione.

*The in-house production process is developed thanks to cutting-edge technology: a high-performance overlay is applied to the decorated technical fabric to waterproof, protect and hermetically seal the fabric base and decoration.*



## GLAMFUSION® ADHESIVE AQUA



L'adesivo speciale GlamFusion® Adhesive Aqua, fornito da Glamora, garantisce, con un'unica operazione, il perfetto incollaggio a parete del wallcovering e la sigillatura ermetica delle giunzioni tra i teli, grazie alle sue proprietà igroindurenti. Il sigillante impermeabilizzante GlamFusion® Sealant, sempre provvisto da Glamora, assicura la completa sigillatura del punto di congiunzione tra la parete e il piatto doccia, così come dei punti di contatto con gruppi idraulici, lavabi e superfici di altro genere.

*The GlamFusion® Adhesive Aqua, the special adhesive provided by Glamora, ensures that the wallcovering perfectly adheres to the wall while creating a hermetic seal between the sheets' seams thanks to its moisture-curing properties. Glamora's waterproofing GlamFusion® Sealant, included with the product, ensures that the place where the wall and shower tray meet, as well as other contact points, including the area around faucets, sinks, and similar surfaces, are fully sealed.*

MEMORIA





# CARACTÈRE



Code: GLF921A  
Colour Variants: P. 206

# QUISISANA



Code: GLF881A  
Colour Variants: P. 206

# ANACAPRI



Code: GLF731A  
Colour Variants: P. 206



SEGRETO







# AZUR



Code: GLF871A  
Colour Variants: P. 207

# NEBULA



Code: GLF651A  
Colour Variants: P. 207





# AROMAS



Code: GLF841A  
Colour Variants: P. 208

# DEVOTION



Code: GLF661A  
Colour Variants: P. 208





ELLE



Code: GLF761A  
Colour Variants: P. 208

OLTREMARE





# SPIKE



Code: GLF681A  
Colour Variants: P. 209

# FONTELINA



Code: GLF671A  
Colour Variants: P. 209





# CRONO



Code: GLF861A  
Colour Variants: P. 209



## SLEEPERS



Code: GLF781A  
Colour Variants: P. 210

ALBA



Code: GLF891A  
Colour Variants: P. 210



SAPHIR





# MOONSHOT



Code: GLF771A  
Colour Variants: P. 210

# PIAZZETTA



Code: GLF691A  
Colour Variants: P. 211

CONTEMPLATION





Code: GLF821A  
Colour Variants: P. 211



# WHISPER



Code: GLF751A  
Colour Variants: P. 211

# MISTERY



Code: GLF831A  
Colour Variants: P. 211



# FLIRTING



Code: GLF741A  
Colour Variants: P. 212



# COLOUR VARIANTS

Collection XI

# CREATIVE WALLCOVERINGS

LOVERS

P. 22



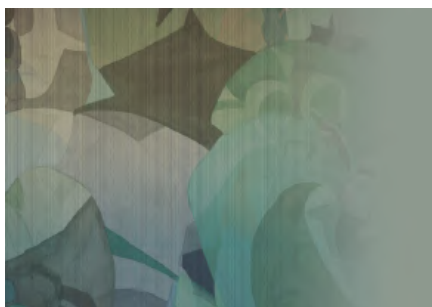
GLXI11A



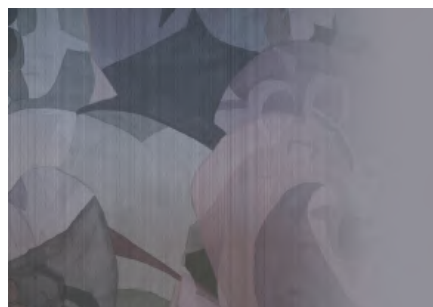
GLXI12A

CAMELEON

P. 24



GLXI351A



GLXI352A

HANAMI

P. 25



GLXI561A



GLXI562A

BRIGHT CRYSTAL

P. 26



GLXI311A



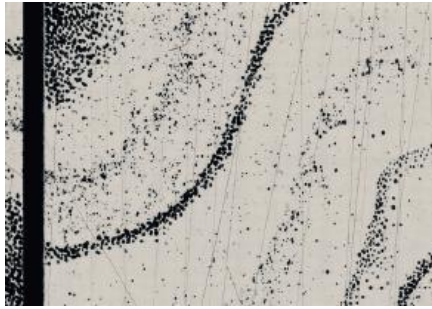
GLXI312A

Le colorazioni dei prodotti riportati sul catalogo sono da ritenersi puramente indicative e non hanno valore di prova colore.  
*The colours printed in this catalogue have to be considered merely indicative and have no colour proof value.*



# CREATIVE WALLCOVERINGS

FLOAT  
P. 28



GLXI531A



GLXI532A

WINK  
P. 30

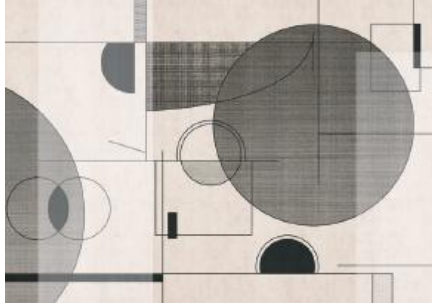


GLXI481A

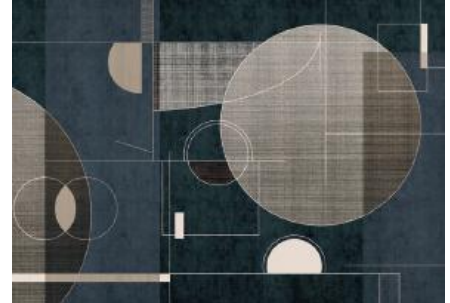


GLX482A

LAPIS  
P. 31

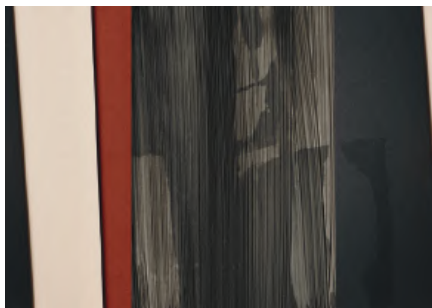


GLXI411A



GLXI412A

EPILOGUE  
P. 32



GLXI651A



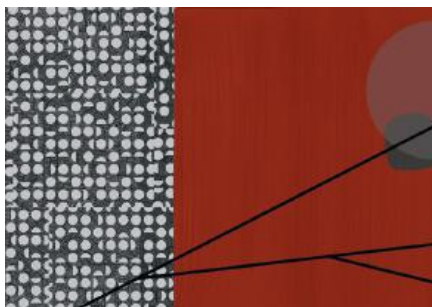
GLXI652A

Le colorazioni dei prodotti riportati sul catalogo sono da ritenersi puramente indicative e non hanno valore di prova colore.  
*The colours printed in this catalogue have to be considered merely indicative and have no colour proof value.*

# CREATIVE WALLCOVERINGS

LINEA

P. 34



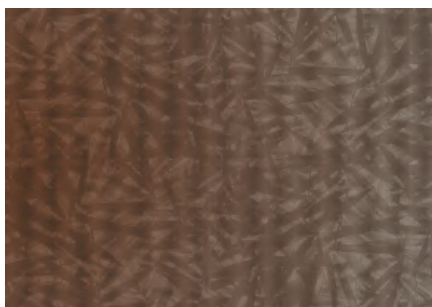
GLXI461A



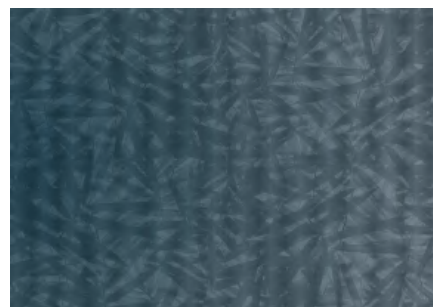
GLXI462A

INCANTO

P. 35



GLXI231A



GLXI232A

COCOUN

P. 36



GLXI491A



GLXI492A

TAIKI

P. 38



GLXI541A



GLXI542A

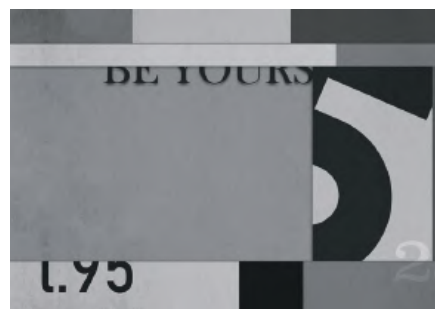
Le colorazioni dei prodotti riportati sul catalogo sono da ritenersi puramente indicative e non hanno valore di prova colore.  
*The colours printed in this catalogue have to be considered merely indicative and have no colour proof value.*

## CREATIVE WALLCOVERINGS

JEU  
P. 40



GLXI361A

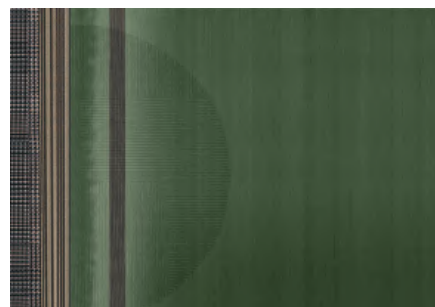


GLXI362A

KARIBU  
P. 41



GLXI721A



GLXI722A

MIMAS  
P. 42

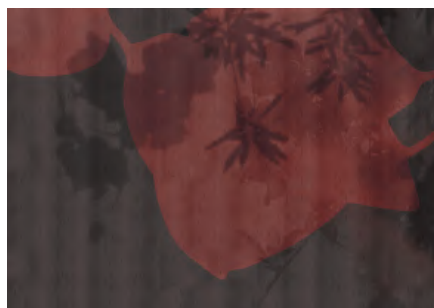


GLXI671A



GLXI672A

RITUAL  
P. 44



GLXI591A



GLXI592A

Le colorazioni dei prodotti riportati sul catalogo sono da ritenersi puramente indicative e non hanno valore di prova colore.  
*The colours printed in this catalogue have to be considered merely indicative and have no colour proof value.*

# CREATIVE WALLCOVERINGS

RICORDI

P. 45



GLXI71A



GLXI72A

KOI

P. 46



GLXI621A



GLXI622A

AOMORI

P. 48



GLXI571A



GLXI572A

CIRCUS

P. 50



GLXI741A



GLXI742A

Le colorazioni dei prodotti riportati sul catalogo sono da ritenersi puramente indicative e non hanno valore di prova colore.  
*The colours printed in this catalogue have to be considered merely indicative and have no colour proof value.*

# CREATIVE WALLCOVERINGS

ENIGMA

P. 51



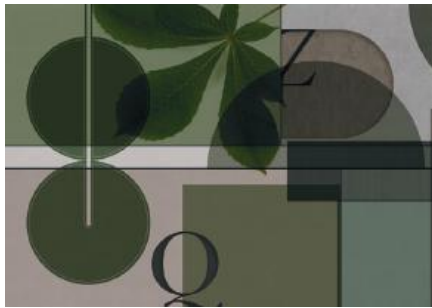
GLXI691A



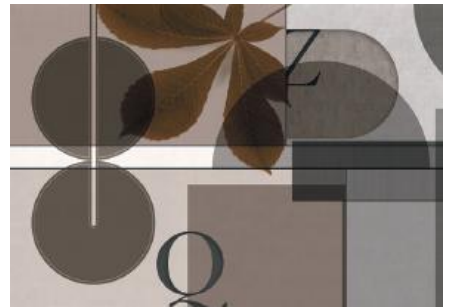
GLXI692A

ARMILLA

P. 52



GLXI391A



GLXI392A

CAILLOU

P. 54



GLXI521A



GLXI522A

AIR DU JARDIN

P. 55



GLXI221A



GLXI222A

Le colorazioni dei prodotti riportati sul catalogo sono da ritenersi puramente indicative e non hanno valore di prova colore.  
*The colours printed in this catalogue have to be considered merely indicative and have no colour proof value.*

## CREATIVE WALLCOVERINGS

TROPICALIA

P. 56



GLXI661A



GLXI662A

FAVOLA

P. 58



GLXI161A



GLXI162A

TORI

P. 60



GLXI771A



GLXI772A

AMARETTO

P. 61



GLXI371A



GLXI372A

Le colorazioni dei prodotti riportati sul catalogo sono da ritenersi puramente indicative e non hanno valore di prova colore.  
*The colours printed in this catalogue have to be considered merely indicative and have no colour proof value.*

# CREATIVE WALLCOVERINGS

MANIFESTO

P. 62



GLXI451A



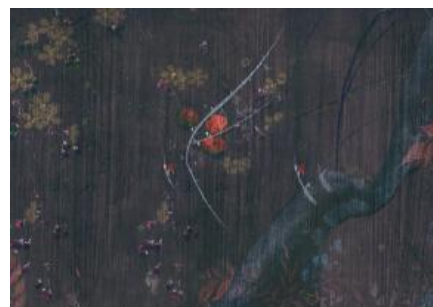
GLXI452A

NIDO

P. 64



GLXI611A



GLXI612A

PASSEPARTOUT

P. 65



GLXI111A



GLXI112A

ESEDRA

P. 66



GLXI751A



GLXI752A

Le colorazioni dei prodotti riportati sul catalogo sono da ritenersi puramente indicative e non hanno valore di prova colore.  
*The colours printed in this catalogue have to be considered merely indicative and have no colour proof value.*

## CREATIVE WALLCOVERINGS

HOPE

P. 68



GLXI421A



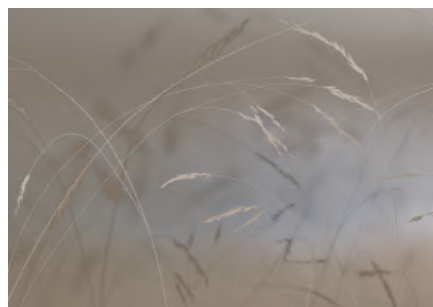
GLXI422A

SOFFIO

P. 70



GLXI41A



GLXI42A

EQUILIBRIUM

P. 71



GLXI331A



GLXI332A

YOU

P. 72



GLXI211A



GLXI212A

Le colorazioni dei prodotti riportati sul catalogo sono da ritenersi puramente indicative e non hanno valore di prova colore.  
*The colours printed in this catalogue have to be considered merely indicative and have no colour proof value.*

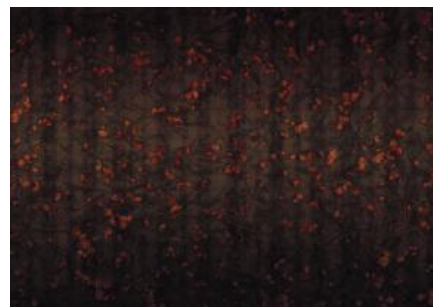


# CREATIVE WALLCOVERINGS

PIAF  
P. 74

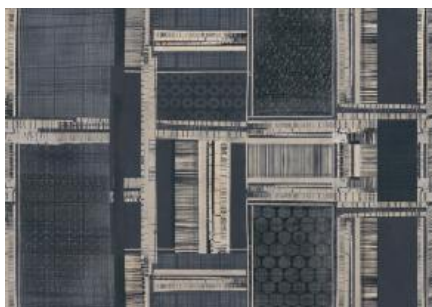


GLXI151A



GLXI152A

TAIPEI  
P. 75

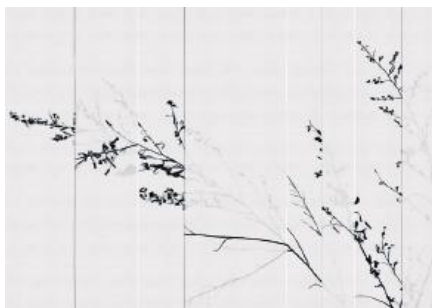


GLXI731A



GLXI732A

PAUSE  
P. 76



GLXI241A



GLXI242A

PRELUDE  
P. 78



GLXI641A



GLXI642A

Le colorazioni dei prodotti riportati sul catalogo sono da ritenersi puramente indicative e non hanno valore di prova colore.  
*The colours printed in this catalogue have to be considered merely indicative and have no colour proof value.*

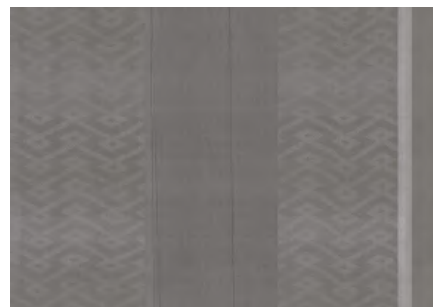
## CREATIVE WALLCOVERINGS

ATOLLO

P. 80



GLXI681A



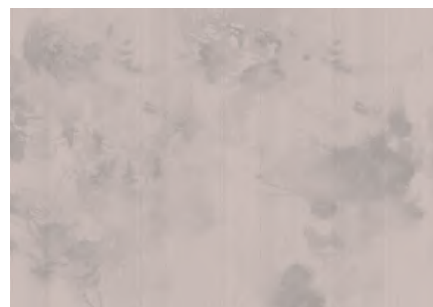
GLXI682A

SILENZIO

P. 81



GLXI91A



GLXI92A

INFINITO

P. 82



GLXI441A



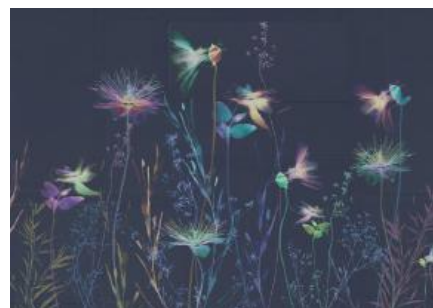
GLXI442A

EMOZIONI

P. 84



GLXI271A



GLXI272A

Le colorazioni dei prodotti riportati sul catalogo sono da ritenersi puramente indicative e non hanno valore di prova colore.  
*The colours printed in this catalogue have to be considered merely indicative and have no colour proof value.*

## CREATIVE WALLCOVERINGS

PIUMA

P. 85



GLXI181A



GLXI182A

LUCE

P. 86



GLXI261A



GLXI262A

LUCID DREAM

P. 88



GLXI291A



GLXI292A

ECHOES

P. 90



GLXI631A

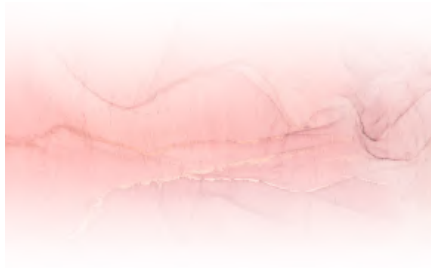


GLXI632A

Le colorazioni dei prodotti riportati sul catalogo sono da ritenersi puramente indicative e non hanno valore di prova colore.  
*The colours printed in this catalogue have to be considered merely indicative and have no colour proof value.*

# CREATIVE WALLCOVERINGS

SOLEIL  
P. 91

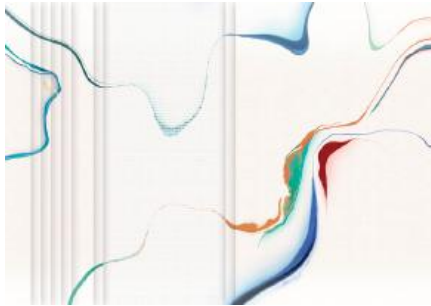


GLXI281A



GLXI282A

HYBRID  
P. 92



GLXI251A



GLXI252A

AMABLE  
P. 94



GLXI171A

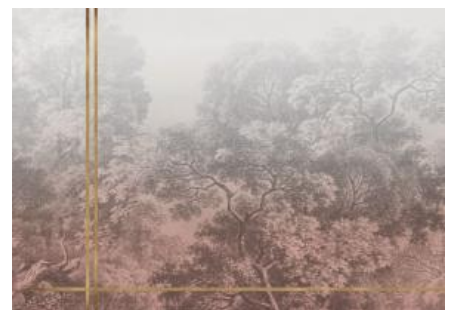


GLXI172A

NOVEL  
P. 95



GLXI121A



GLXI122A

Le colorazioni dei prodotti riportati sul catalogo sono da ritenersi puramente indicative e non hanno valore di prova colore.  
*The colours printed in this catalogue have to be considered merely indicative and have no colour proof value.*

## CREATIVE WALLCOVERINGS

MAMBO

P. 96



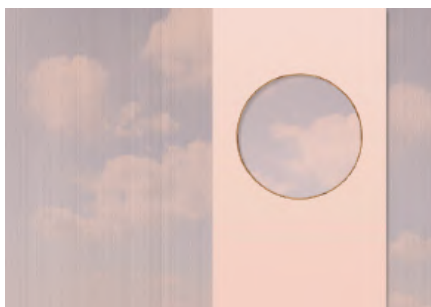
GLXI341A



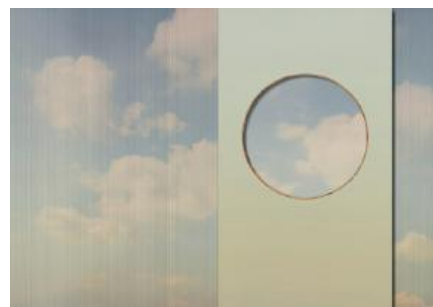
GLXI342A

PARADISO

P. 98



GLXI131A



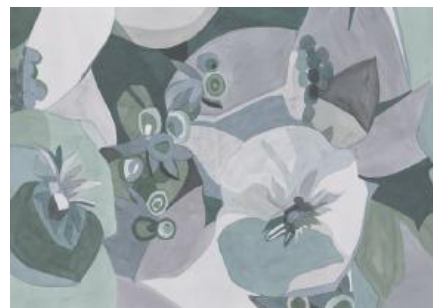
GLXI132A

BOUQUET

P. 100



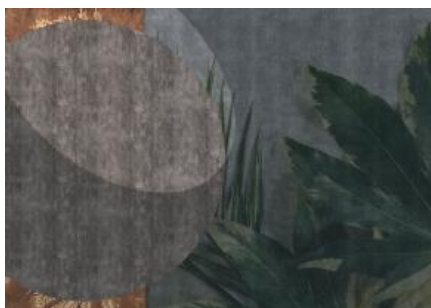
GLXI471A



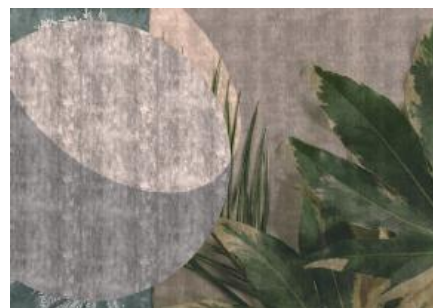
GLXI472A

FILIX

P. 101



GLXI81A



GLXI82A

Le colorazioni dei prodotti riportati sul catalogo sono da ritenersi puramente indicative e non hanno valore di prova colore.  
*The colours printed in this catalogue have to be considered merely indicative and have no colour proof value.*

# CREATIVE WALLCOVERINGS

PER SEMPRE  
P. 102



GLXI21A

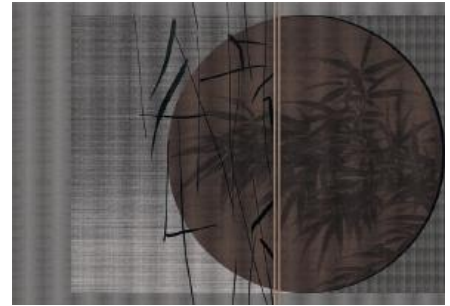


GLXI22A

SABI  
P. 104



GLXI581A



GLXI582A

ARPA  
P. 105

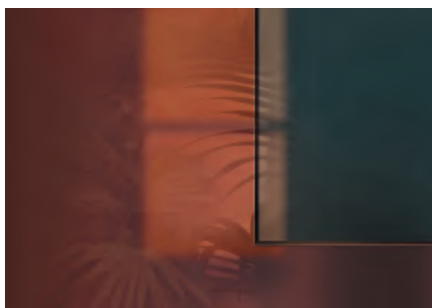


GLXI711A

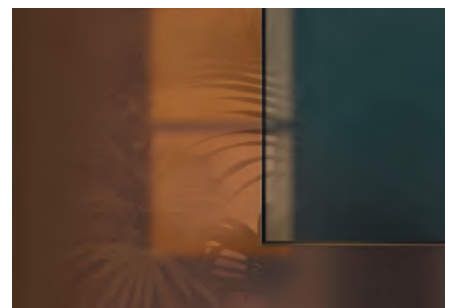


GLXI712A

CELATO  
P. 106



GLXI141A



GLXI142A

Le colorazioni dei prodotti riportati sul catalogo sono da ritenersi puramente indicative e non hanno valore di prova colore.  
*The colours printed in this catalogue have to be considered merely indicative and have no colour proof value.*

## CREATIVE WALLCOVERINGS

EMPATHY

P. 108



GLX131A



GLX132A

LA FLEUR

P. 110



GLX151A



GLX152A

FUTURE PERFECT

P. 111



GLX1381A



GLX1382A

GRADIENT

P. 112



GLX1321A



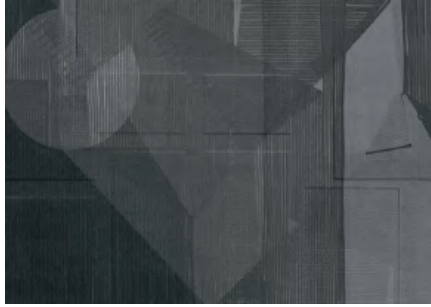
GLX1322A

Le colorazioni dei prodotti riportati sul catalogo sono da ritenersi puramente indicative e non hanno valore di prova colore.  
*The colours printed in this catalogue have to be considered merely indicative and have no colour proof value.*

## CREATIVE WALLCOVERINGS

QUADROPHENIA

P. 114



GLXI431A



GLXI432A

CHARMING LADY

P. 115



GLXI61A



GLXI62A

OVERSEAS

P. 116



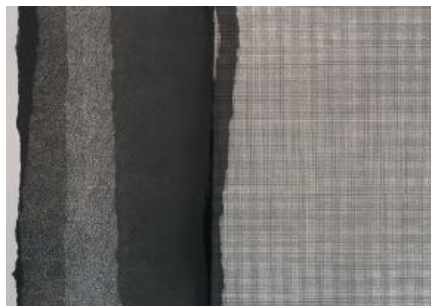
GLXI761A



GLXI762A

CAFUNÉ

P. 118



GLXI511A



GLXI512A

Le colorazioni dei prodotti riportati sul catalogo sono da ritenersi puramente indicative e non hanno valore di prova colore.  
*The colours printed in this catalogue have to be considered merely indicative and have no colour proof value.*



## CREATIVE WALLCOVERINGS

FOLIA  
P. 120



GLXI191A

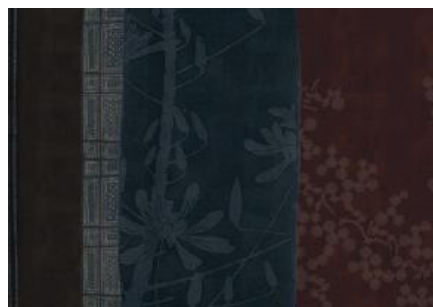


GLXI192A

SHIBUMI  
P. 121



GLXI551A



GLXI552A

Le colorazioni dei prodotti riportati sul catalogo sono da ritenersi puramente indicative e non hanno valore di prova colore.  
*The colours printed in this catalogue have to be considered merely indicative and have no colour proof value.*

# GLAMPURE

TEMPS PERDU

P. 126



GLPU31A



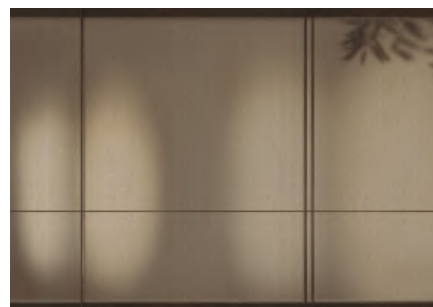
GLPU31B

STILLE

P. 128



GLPU71A



GLPU71B

FOLIAGE

P. 129



GLPU21A



GLPU21B

INTERPLAY

P. 130



GLPU91A



GLPU91B

Le colorazioni dei prodotti riportati sul catalogo sono da ritenersi puramente indicative e non hanno valore di prova colore.  
*The colours printed in this catalogue have to be considered merely indicative and have no colour proof value.*

# GLAMPURE

KOKORO

P. 132



GLPU111A



GLPU111B

MATERIA

P. 134



GLPU11A



GLPU11B

SENSITIVE

P. 135



GLPU41A



GLPU41B

QUIET PLACE

P. 136



GLPU51A



GLPU51B

Le colorazioni dei prodotti riportati sul catalogo sono da ritenersi puramente indicative e non hanno valore di prova colore.  
*The colours printed in this catalogue have to be considered merely indicative and have no colour proof value.*

# GLAMPURE

MORNING LIGHT

P. 138



GLPU81A



GLPU81B

SPARK

P. 139



GLPU61A



GLPU61B

Le colorazioni dei prodotti riportati sul catalogo sono da ritenersi puramente indicative e non hanno valore di prova colore.  
*The colours printed in this catalogue have to be considered merely indicative and have no colour proof value.*



# GLAMFUSION

MEMORIA

P. 146



GLF811A



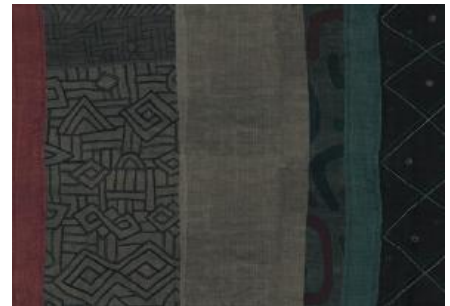
GLF812A

CARACTÈRE

P. 148



GLF921A



GLF922A

QUISISANA

P. 149



GLF881A



GLF882A

ANACAPRI

P. 150



GLF731A



GLF732A

Le colorazioni dei prodotti riportati sul catalogo sono da ritenersi puramente indicative e non hanno valore di prova colore.  
*The colours printed in this catalogue have to be considered merely indicative and have no colour proof value.*

# GLAMFUSION

SEGRETO

P. 152



GLF711A



GLF712A

AZUR

P. 154



GLF871A



GLF872A

NEBULA

P. 155



GLF651A



GLF652A

PHILO

P. 156



GLF851A



GLF852A

Le colorazioni dei prodotti riportati sul catalogo sono da ritenersi puramente indicative e non hanno valore di prova colore.  
*The colours printed in this catalogue have to be considered merely indicative and have no colour proof value.*

# GLAMFUSION

AROMAS

P. 158



GLF841A



GLF842A

DEVOTION

P. 159



GLF661A



GLF662A

ELLE

P. 160



GLF761A



GLF762A

OLTREMARE

P. 162



GLF911A



GLF912A

Le colorazioni dei prodotti riportati sul catalogo sono da ritenersi puramente indicative e non hanno valore di prova colore.  
*The colours printed in this catalogue have to be considered merely indicative and have no colour proof value.*



# GLAMFUSION

SPIKE  
P. 164



GLF681A



GLF682A

FONTELINA  
P. 165

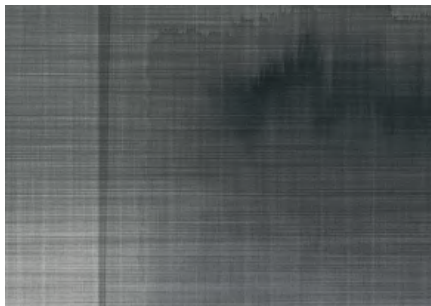


GLF671A



GLF672A

JOVIS  
P. 166



GLF791A



GLF792A

CRONO  
P. 168



GLF861A



GLF862A

Le colorazioni dei prodotti riportati sul catalogo sono da ritenersi puramente indicative e non hanno valore di prova colore.  
*The colours printed in this catalogue have to be considered merely indicative and have no colour proof value.*

# GLAMFUSION

## SLEEPERS

P. 169



GLF781A



GLF782A

## ALBA

P. 170



GLF891A



GLF892A

## SAPHIR

P. 172



GLF721A



GLF722A

## MOONSHOT

P.174



GLF771A



GLF772A

Le colorazioni dei prodotti riportati sul catalogo sono da ritenersi puramente indicative e non hanno valore di prova colore.  
*The colours printed in this catalogue have to be considered merely indicative and have no colour proof value.*

# GLAMFUSION

PIAZZETTA

P. 175



GLF691A



GLF692A

CONTEMPLATION

P. 176



GLF821A



GLF822A

WHISPER

P. 178



GLF751A



GLF752A

MISTERY

P. 179



GLF831A



GLF832A

Le colorazioni dei prodotti riportati sul catalogo sono da ritenersi puramente indicative e non hanno valore di prova colore.  
*The colours printed in this catalogue have to be considered merely indicative and have no colour proof value.*

# GLAMFUSION

FLIRTING

P. 180



GLF741A



GLF742A

Le colorazioni dei prodotti riportati sul catalogo sono da ritenersi puramente indicative e non hanno valore di prova colore.  
*The colours printed in this catalogue have to be considered merely indicative and have no colour proof value.*



## **GLAMORA**

Glamora Srl  
Via Berna, 12/14  
41049 Sassuolo (MO) – Italy  
T. +39 0536 076403  
contact@glamora.it  
glamora.it

Glamora Showroom  
Via Solferino, 27  
20121 Milano – Italy

### Awards:

2021 German Design Award  
2020 German Design Award  
2017 Archiproducts Design Awards  
2016 Archiproducts Design Awards  
2015 Designer Kitchen & Bathroom Awards  
2013 Interior Design “Best of Year” Awards

Not any part of this work can be reproduced in any way  
without the preventive written authorization by Glamora.  
All work is copyrighted © to their respective owners.



